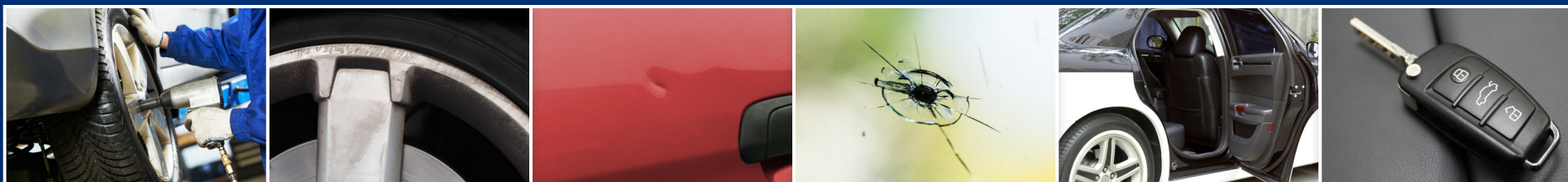


Total Ultimate Protection

Total Ultimate Protection	Plan A	Plan B	Plan C
Tire & Wheel with Curb	✓	✓	✓
Cosmetic Wheel Coverage	✓	✓	✓
Dent & Ding Repair		✓	✓
Windshield Repair		✓	✓
Interior/Exterior Repair		✓	✓
Key Replacement			✓



Tire & Wheel

Road hazard coverage with no deductible or hidden fees, to include mounting, balancing, and valve stems; wheels, sales tax, and labor charges.

- Covers damage from blowouts, nails, glass, potholes, and debris
- Covers aftermarket wheels meeting manufacturer's specs

Also Covers:
Curb Damage and Tire Pressure Monitoring Sensors

Cosmetic Wheel Coverage

A repair process that restores the appearance of your wheels.

- Repairs scrapes, scratches, and nicks caused by curb damage
- If not repairable, the wheel will be replaced

Wheel Covers (Hubcaps), Alloy, Chrome, and Chrome Clad Wheels are Covered

Dent & Ding Repair

Minor dents and door dings are removed by trained technicians.

- No limit to the number of times the Paintless Dent Repair process can be applied
- No sanding, painting, or body fillers are used
- Hail damage deductible is covered up to \$1000 when using Paintless Dent Repair

Windshield Repair

A permanent process in which cracks and breaks may be repaired with a powerful resin.

- A trained technician will repair your damaged windshield, so you avoid the cost of replacement
- Repairs minor stars, cracks and chips
- Can save on having to pay a costly windshield deductible

Interior/Exterior Repair

Professional cleanup, reconditioning, or repairs to the vehicle's interior surfaces, and reconditioning of exterior surfaces.

- Exterior protection against fading, road salt, tree sap, bird droppings, acid rain, loss of gloss, and more
- Covers interior damage to vinyl, leather, carpet, fabric, and upholstery

Key Replacement

If keys are lost or damaged, keys are replaced and programming charges are covered.

- Today's technology has made keys and keyless fobs costly to replace
- Coverage offers 24-hour emergency roadside assistance including towing, lockout assistance, and tire.
- Nationwide 24/7/365 service

More Coverage for Better Protection



Construction Zones

Cosmetic Damage to Wheel Covers (Hubcaps)

Metal Plates on the Road

Cosmetic Damage on Chrome & Chrome Clad

Car Washes

Tire Pressure Monitoring Sensors

Curb Damage

Aftermarket Wheels with no Surcharges

Snow Tires

Replacement for Wheels with Unrepairable Cosmetic Damage

Hail Damage

Total Ultimate Protection	Plan A	Plan B	Plan C
Tire & Wheel with Curb	✓	✓	✓
Cosmetic Wheel Coverage	✓	✓	✓
Dent & Ding Repair		✓	✓
Windshield Repair		✓	✓
Interior/Exterior Repair		✓	✓
Key Replacement			✓

Total Ultimate Protection



Tire & Wheel



Cosmetic Wheel Coverage



Dent & Ding Repair



Windshield Repair



Interior/Exterior Repair



Key Replacement

More Coverage for Better Protection



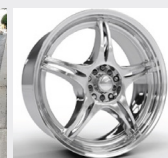
Construction Zones



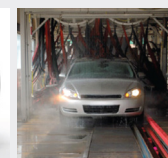
Cosmetic Damage to Wheel Covers (Hubcaps)



Metal Plates on the Road



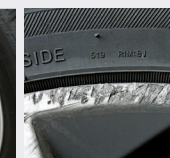
Cosmetic Damage on Chrome & Chrome Clad



Car Washes



Tire Pressure Monitoring Sensors



Curb Damage



Aftermarket Wheels with no Surcharges



Snow Tires



Replacement for Wheels with Unrepairable Cosmetic Damage



Hail Damage

Also Includes

Nails • Glass • Sharp Objects • Tree Limbs • Road Debris • Potholes
Parking Lots • No Limits • Transferable • And More